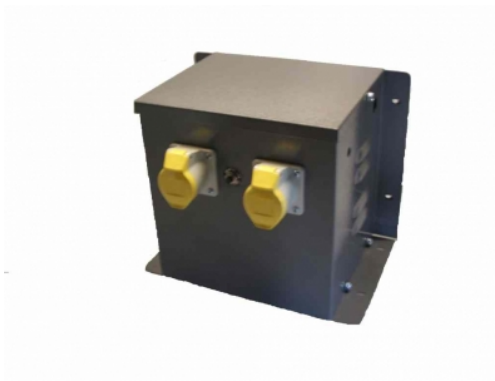


Datasheet for: WM2250

Product Type: Enclosed isolating transformers

225VA 230v to 2x110v CTE 16amp sockets



| | |
|--------------------|---|
| VA | 2250 |
| Input Voltage | 230 |
| Input Termination | Screw terminals |
| Input Current | 10 |
| amps | 20.454545454545 |
| Output Voltage | 110 |
| Output Termination | 2 x 16amp yellow sockets |
| Product Case | P3 Industrial floor/wall mounting case IP23 |
| Dimension | Ht:244 W:180 L:270 |
| Weight | 15kg |
| Primary Protection | Push to reset circuit breaker SP12 |
| Surge Protection | SL32 Surge Limitor |
| Product Type | Safety Isolating transformer Conforms to EN61558-2-23 CE & RoHS |
| Regulation | 0.04 |

Commodity code: 851539130

RoHS Certificate: Airlink Transformers certifies and testifies that all the products and goods delivered and invoiced, do not contain any of the hazardous substances as mentioned in the 2011/65/EU European directives (RoHS). Particularly these products do not contain: Heavy metals such as Pb, Cd, Cr6+ Bifenil Polybromurate (PBB) Ether Difenil Polybromurate (PEDE)



Declaration of Conformity: Airlink Transformers declare that the product WM2250 conforms to current European safety and EMC regulation EN61558-2-6 (Safety Isolating transformer) CE & RoHS compliant. Manufactured to Class A 105degC.

Declaration by the Exporter: The exporter of the product covered by this document declares that these products are of EU preferential origin.
16/04/2026